

voice

www.kingswoodparks.co.uk

...the best place to live in Hull



“We’ve got mega church plans for Kingswood Parks”

INSIDE THIS ISSUE:

Win free Costa coffee for a year!

New housebuilders come to Kingswood Parks

- Charles Church & Linden Homes

Join Kingswood Parks’ football team!

Plus latest news from Kingswood College of Arts,

with work starting on the new building!

Welcome to the Voice...

Welcome to the Kingswood Parks Voice magazine, brought to you by the Kingswood Parks Development Company (KPDC), which has managed/developed most of the land in Kingswood Parks. This magazine is designed to keep you up-to-date with the latest news from your area, informing you of any exciting developments on the way.

Kingswood Area Action Plan

As we mentioned in the last issue of the Voice there are some major long term plans for Kingswood Parks. In the next edition of this magazine you should be able to see the Kingswood Area Action Plan Issues and Options Questionnaire, which will be your chance to give us your thoughts on what you wish to see in the future in your area.

Church plans in early stages

We are delighted to inform readers that we are in talks with leaders at the New Life Church about the possibility of them developing a state-of-the-art, modern church and community facility in Kingswood Parks. These plans are in the very early stages, but the church is keen to relocate from Hull city centre, bringing its 500-strong congregation here and offering a whole new range of community facilities for local residents.

New housebuilders for Kingswood Parks

Househunters in the area will be pleased to know that two new housebuilders are coming to the development. Work will start on a Charles Church development later in the year, offering 60 large, detached family homes. Meanwhile, Linden Homes is planning a development of 79 new properties including one, two, three and four-bedroom homes.

Costa coffee won't cost one winner a thing!

In this issue, we are offering one lucky reader the chance to win two free coffees every week for the next year at the popular Costa coffee shop, which opened in Kingswood Parks last July. All you have to do to be in with a chance of winning is read the story on page 11 and then write into us at the address on the back of this magazine, telling us how many coffees have been served there since they opened in the development.

Eggcellent competition winner

One lucky reader was 'eggstatic' when we told her she had won our Kidz Corner competition.

Eight-year-old Rachel Fox, of Kingswood Parks, entered our Easter themed competition and designed her own egg in lovely, bright colours. She also told us that she planned to spend the Easter weekend doing an egg hunt in her garden.

Our congratulations go to Rachel, who won the biggest Cadbury's Caramel egg we could find, as well as a family ticket to Cineworld!

Rachel said: "I was really happy when I found out I had won the competition. I had a nice Easter and got lots of chocolate eggs, so winning another one in this competition was great! I also got a Build-A-Bear for Easter."



Best Wishes Kelly

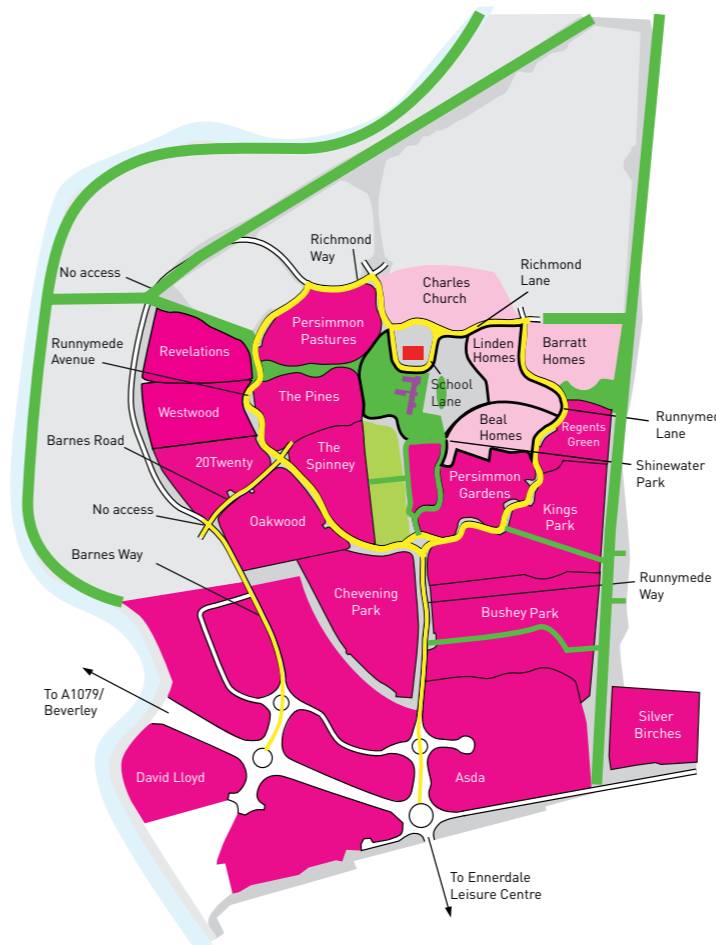
Rachel's winning design



Rachel with her Cadbury's Caramel Egg

Kingswood Parks is growing...

Kingswood Parks is continuing to grow at a steady rate, providing more housing in the popular development, as well as an ever increasing range of facilities for the local community. This outline drawing gives readers an overview of where the current housebuilders' sites are and where the new ones will be, as well as indicating where the gradually emerging village centre is.



Key to Health Centre Access map

- Kingswood Parks development
- Health centre
- Proposed village centre area
- Proposed School
- Vehicle and pedestrian access
- Green space and walkways
- Future development
- Ings woodland
- New developments

Kingswood Parks to sponsor local football team



A local Sunday afternoon football team has received much needed sponsorship from Kingswood Parks Development Company and is encouraging other members of the community to train with them.

Paul Newman, managing director of Barratt Homes and David Wilson Homes Yorkshire East Division, who plays and helps organise the team, said: "After two successful seasons which include winning the cup final last year, and getting to the final this year, we unfortunately lost our previous sponsorship. It was essential that we found a local company that was willing to sponsor our team so we could go on to play again next season."

"Our team consists of players who predominantly live in Kingswood and Bransholme, so this new sponsorship partnership with Kingswood Parks Development Company is gratefully received and we hope it will continue to boost community spirit in the area."

The newly named Kingswood Parks FC team trains locally, but is in the process of looking for new training facilities. "We look forward to the Kingswood Parks community supporting us when the new season begins in September and welcome any interested locals who would like to try out for the team in the future," he added.

Kingswood Parks Voice magazine will continue to update readers on the progress of the team throughout future issues over the next football season.

For more information about how to get involved with the team, call Neil on 07966 621068.

Multi-million pound church development could breathe new life into Kingswood Parks

The proposed development of a purpose-built, modern church in Kingswood Parks could provide a real community hub for residents.

Having been based in Bridlington Avenue, Hull city centre, for 80 years, the New Life Church has outgrown its 400-seat venue, and leaders there are hoping to build the region's largest modern church auditorium right here in Kingswood Parks.

Representing a potential investment of more than £2m, the church could be located on a site near Bonus Electrical's premises, if it progresses past these early planning stages.

New Life Church is part of a protestant denomination called Assemblies of God, which has 600 churches across the UK. Globally, it is approximately the same size as the Anglican Church, and indeed still growing.

Leader Jarrod Cooper, who is a Kingswood Parks resident himself, is proposing to bring the church's main congregation to Kingswood Parks, which would see an exciting range of community enhancing clubs, events and activities made available to residents. His 500-strong congregation represents a full spread of ages from babies right through to those in their 90s.

The proposal includes a 2500m² facility, with a children's soft play area, a small coffee shop, a mother and toddler group, as well as a bookshop, and community rooms for dance and music classes, self defence and exercise groups. For businesses, a conferencing, exhibition and events area could potentially have enough capacity for 1,000 people.

New Life Church already provides everything from youth clubs, children's clubs and family activities through to organised activities such as golf, badminton, fishing and even lunches for the elderly, all of which would be brought to Kingswood Parks if plans go ahead.

Jarrod said: "The plans for this are only in the very early stages, but we are very focused on working towards bringing the church to Kingswood Parks. People can expect an informal atmosphere at the New Life Church, it's friendly, family orientated, and what some would call "Happy, Clappy" in style, with music closer to a Westlife concert than a stately cathedral.

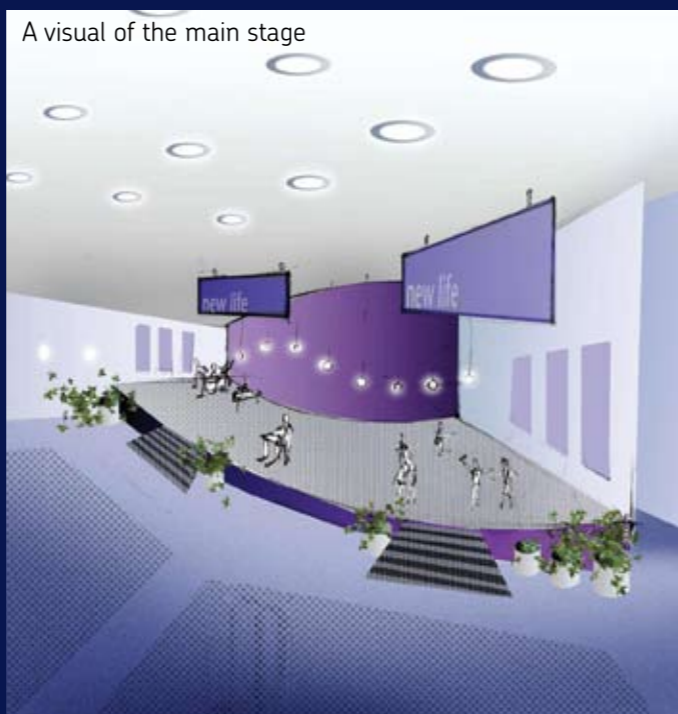
"Churches like New Life are growing rapidly across the country, with most major cities having at least one large, contemporary congregation, with over 1,000 members. Several exceed 5,000 members, regularly booking the Royal Albert Hall or small stadiums for special events. Now Hull could be the next city to house what some call a Mega Church."



Jarrod Cooper (left) and Nigel Lendon of New Life Church



This is how the church entrance could look



A visual of the main stage

Tell us your views & win a £40 voucher

Submit your completed survey by July 31st to be in with the chance of winning a £40 Frankie and Bennys voucher in a prize draw!

New Life Church would like to know what facilities Kingswood Parks residents would be keen to see at their new local church, if this scheme progresses.

What else would you like to see in Kingswood Parks that New Life Church could provide?

Which of the following activities would you or your family use? (please tick):

- Children's soft play area with coffee shop
- Coffee shop
- Mother and toddler group
- Bookshop
- Church services
- The hire of community rooms
- Dance
- Exercise classes
- Slimming clubs
- Music classes
- Self defence groups
- Conferencing facilities
- Exhibition
- Youth clubs
- Children's clubs
- Mother and toddler group
- Money management advice
- Community family fun days

.....

.....

.....

.....

.....

.....

.....

Please submit your ideas to:

New Life Church
Bridlington Avenue
Hull
HU2 ODU

Or email your preferences to: office@newlifehull.org
Visit www.newlifehull.org for more information
or call (01482) 610705.

Perfect for those in search of pastures new

Persimmon Homes Yorkshire has opened the doors of its new show home at its flagship development in Kingswood Parks.

The Persimmon Pastures development, which offers luxurious three and four bedroom family homes, has already attracted an unprecedented number of visitors, with more anticipated following the launch of the show home and the increase in people considering moving home in the spring.

Located on Hyde Park Road, off Runnymede Avenue, the new Waddesdon style show home will give house hunters a taste of the life they could live in one of the development's new homes, in addition to showcasing some of the design schemes buyers can use in their own new home.

Available from just £214,999, the detached Waddesdon is a good sized family home. With four large bedrooms, family bathroom and en-suite in the master bedroom, in addition to a large kitchen-diner, utility room, lounge and separate dining room, the house has been designed to offer maximum space and luxury.

"We pride ourselves on offering fantastic new homes that meet the needs of our buyers and also creating communities for families, professionals and first time buyers to enjoy," said Andrew Bowes, Managing Director of Persimmon Homes Yorkshire. "We strongly believe that this is why the homes at Persimmon Pastures have been so popular – it's not just about creating new homes, but new lifestyles."

Persimmon Pastures is also one of only a few developments in the city to offer house hunters support in climbing the property ladder with the availability of Shared Equity.

The housebuilder's Shared Equity Scheme enables buyers to purchase 100 per cent of the property for as little as 80 per cent of its value, with Persimmon Homes providing a five year interest free loan on the remaining 20 per cent.



Andrew added: "We've listened to house hunters and we appreciate how hard it's been for them to move in the current climate which is why we created this scheme. Shared Equity gives buyers at every rung on the property ladder a helping hand to not only afford their own property but also their dream home."

"We're thrilled to be only one of a small number of house builders to be able to offer this to the city and we encourage more people to take advantage of it while it's still available."

Kingswood Parks benefits from being close enough to the city centre for easy access, good transport links to the local market town of Beverley and the city of York, whilst also being located in the heart of the Kingswood Parks' retail and entertainment district – ideal for both young professionals and families alike.

For further information on the properties available at Persimmon Pastures, visit the marketing suite, open from Thursday to Monday between 10:30am and 5:30pm or call 08443757062. Alternatively, visit www.persimmonhomes.com or text 'Persimmon' to 84840.



Charles Church comes to Kingswood Parks

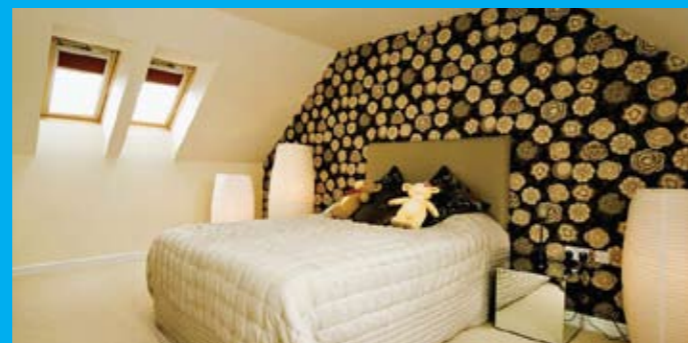
A house builder renowned for offering luxury properties has announced plans to launch its first development in Hull, right here at Kingswood Parks.

Work will commence at the Charles Church development, called Charles Church Meadows, later in the year to create 60 large, detached family homes.



Renowned for prestigious developments across the region, excitement has already started to build in anticipation of Charles Church Yorkshire's arrival at Kingswood Parks, with managing director, Andrew Bowes commenting: "Charles Church Meadows is our first development in the area, but it certainly will not be our last. Kingswood Parks is a thriving residential community and we hope to bolster the growing demand it has attracted with luxury living."

Kingswood Parks Voice readers will be kept up-to-date as soon as work starts on site. For more information about Charles Church please visit www.charleschurch.com



Linden Homes' plans to build wide range of properties

Prestigious housebuilder Linden Homes has announced plans to build 79 new homes in Kingswood Parks.

Offering a selection of traditional style, two-storey homes, work on the development is due to start in June 2011.

The development will benefit from access to the emerging village centre in Kingswood Parks. The project to build the proposed one, two, three and four-bedroom homes is expected to last for two and half years.

To keep up-to-date with news of this exciting development or to register your interest, visit www.lindenhomes.co.uk



Beal Homes predicts sell out summer

With the vast majority of its new homes at Oakwood, in Kingswood Parks, now occupied, family-owned house builder Beal Homes is completing the final properties there.



House hunters can still get their hands on one last two bedroom home and a number of three bedroom designs.

"There has never been a better time to view Oakwood," said Beal's new recruit Katrina Garton. "Now that we are so close to completing this development house hunters can see for themselves the quality of the setting and the variety and character of the homes."

Katrina has joined Beal Homes as sales executive for Oakwood following over four years' experience working for a large national house building company.

"It's great to work for a local, family run company," she says. "So much thought and care has gone into Oakwood, into designing the layout, street scenes and into each home design. The quality of the specification of Beal's homes is superb and it's great to be able to offer house buyers so much choice in terms of internal layout, fixtures and fittings." Katrina warns that buyers will have to move quickly if they want to purchase a two bedroom property. There is now just one Farndale, a smart two bedroom townhouse, available. Three bedroom designs include the Rosedale at £129,995 and the Glaisdale from £146,995. There is one stylish Richmond Crescent property, priced at £159,995, with a super top floor master suite, which over looks a leafy landscaped area, and just two Dalby classic double-fronted homes available both at £169,995.

For those looking for four bedrooms and larger detached properties, Beal Homes is now selling a wide range of off plan designs at nearby Westwood off Runnymede Avenue on the north western edge of Kingswood Parks, and this is where Beal's sales and marketing office is now based. "With so few homes left we are anticipating a 'sell out summer' at Oakwood," says Katrina. "Though, with the exciting new Westwood scheme underway and The Village, Beal's first time buyer development, in the pipeline, I'm looking forward to working for Beal Homes at Kingswood Parks for some time."

Visitors with a home to sell should ask about Beal's Smooth Move and Home Exchange schemes. A support package is also available to first time buyers, including help with deposits and legal fees and, for all buyers, Beal offers a useful mortgage matchmaker service via an independent mortgage advisor with access to over 8,500 mortgage products.

Beal Homes' Oakwood and Westwood developments are based in Runnymede Avenue, Kingswood Parks. The marketing office is open from Thursday to Monday, between 10am and 5pm. For more information, call Beal Homes' free phone on 0800 6121216, or visit us at www.beal-homes.co.uk

News from Kingswood College of Arts

Work starts on the new building

It's been a long time coming, but work has now begun on building the new Kingswood College of Arts school. The contractors are on site and have formed a temporary car park for staff and visitors, and a hoarding has been erected to fully enclose the build area.

The main entrance for vehicles is what used to be the back entrance, on Noddle Hill Way, and pedestrians now access the site from either Cumbrian Way or Noddle Hill Way. There is plenty of signage, but if you need any further help with access, please get in touch with the school.

Young Enterprise success

Students from Kingswood College of Arts recently took part in the Humber sub-region final of the Young Enterprise Company Programme Annual Awards. Their company, Prophaze, was amongst eight finalists, out of 21 that entered.

The team achieved the following awards:

- Best Hull Company
- Outstanding Key Stage 4 Company
- Award for Leadership (Sophie Webster)
- Award for Teamwork



Arts-week Twenty Eleven

This year's arts-week at the school will run from June 27th to July 1st and promises to be the most exciting yet. Staff, supported by a range of professional artists, will be offering a varied menu of innovative activities throughout the week, including a cheerleading challenge, dance and musical theatre workshops, basketball camp, a future-car design project, school of rock, and even an alien autopsy!

The whole school will once again be buzzing, as students, staff and visitors get their creative juices flowing and learn new skills, whilst having a fantastic time.



During the build period, it's business as usual at the school and staff there are enhancing the curriculum provision, based on the principles of their acclaimed "ACE" model. In ACE, students lead and manage their own learning and develop their learning skills, confidence, team-building, initiative and leadership. They do this through cross-curricular projects that help them see how they fit into their local, national and global community. This is the approach that has informed the design of the new building, but even in the current building they are creating exciting, new learning spaces, which will be where new furniture and equipment is tested in advance of the move.

Visit the school

If you've started to think about choosing a secondary school for next year, Kingswood College of Arts is encouraging people to visit them on either June 20th or September 21st 2011, when students and their families will be able to tour the college, meet staff and students, and take part in a range of fun activities, as well as hearing more about the brand new building.

Teachers at the school say that everyone who visits is pleasantly surprised. The events run from 5.00pm to 7.30pm and you can be assured of a warm welcome.

If you can't make either of these dates, just contact the school on (01482) 625733 and they will arrange a visit to suit you.

Creative minds

On May 18th and 19th, Kingswood College of Arts welcomed students, families and friends at their first Create and Perform event, which included a range of activities and displays, as well as a showcase of dance, music and song. Create and Perform is a combination of two of the four "themes" that are beginning to drive the school's curriculum planning and building design.

The themes bring together subjects that have common elements, which allows cross-curricular working and breaks down traditional departmental barriers, making learning more "real", enjoyable and effective.

DON'T FORGET TO SUBMIT YOUR ENTRY FOR

KINGSWOOD PARKS IN BLOOM 2011

Name

Address

Telephone.....

I am entering the following categories:

- Best Front Garden Biggest Marrow
 Tallest Sunflower in the Front Garden (for under-16s)

Alternatively, register your interest via our website feedback form at www.kingswoodparks.co.uk

Calling all green fingered kids - Tallest Sunflower Competition

Why not enter the kids' category in the Kingswood Parks In Bloom 2011 competition? We are challenging every youngster under the age of 16 to grow the tallest Sunflower in Kingswood Parks in their front garden this year, so if you're interested please fill out the entry form above and start planting those seeds! Good luck!

Collect your **FREE sunflower seeds*** at the Persimmon Homes sales office, which is in Runnymede Avenue, but you must show them this copy of the magazine, and have an adult with you, or pester your folks to help you buy some seeds you think may turn out to be taller.

*Seeds will be given out on a first come, first served basis and Kingswood Parks Development Company is not responsible for the safety and welfare of anyone who collects the seeds



WIN free coffee for a year!

Coffee connoisseurs are being given the opportunity to win a tasty prize.

The Kingswood Parks Voice magazine is giving away a prize of two free Costa coffees a week for a whole year, to celebrate the success of the bustling venue since it opened in the retail park last July.

Manager Kathy Burgess says it's a popular spot, so well-liked in fact that they have served up some 85,000 coffees of varying blends since opening their doors. Eight members of staff are employed there.

"Over the last few months, things have really picked up the pace," she said. "We have got lots of regulars who come in, as well as people who are shopping in the area stopping for a drink and snack. We do pastries for breakfast, and we are just in the process of revamping the sandwiches. Pasta salads are available as a healthy option, but there is a wide range of cakes on offer too." Kathy also told us that Costa is popular with mums and the venue is very baby friendly, with fully equipped baby changing facilities, as well as a bottle warming service. Costa, which was founded by Italian brothers Sergio and Bruno Costa in 1971, is open every day of the week in Kingswood Parks. Opening hours are 8am through to 7pm, from Monday to Saturday, and on Sundays between 9am and 5.30pm.

HOW TO ENTER: Write into us at the address on the back of this magazine, telling us how many coffees have been served there since they opened in the development and tell us what you like best about Kingswood Parks. All correct entries will be entered into a prize draw.

Kidz Corner competitions

Win a family pass for a day out at...

With the school summer holidays coming up, we know that finding exciting activities to do and days out for the family can be difficult. That's why we thought that our Kidz Corner winner should win a family day out at The Deep, one of the most popular tourist attractions in Hull.

All you have to do is find all of the 10 words in the word-search below. You will find them in both a horizontal and vertical direction throughout the word-

Cut along here



THE DEEP

search. Don't delay, get your pencils out and start searching for those sea and marine life words.

Post your entry to the address at the bottom of this page before July 31st to be in with a chance of winning.

*A family pass is for a family of four (2 adults and 2 children or 1 adult and 3 children). The pass cannot be used on bank holidays.



| | | | | | | | | | |
|---|---|---|---|---|---|---|---|---|---|
| D | E | E | P | B | N | K | L | L | S |
| D | C | O | R | A | L | B | V | A | E |
| G | U | O | N | S | U | R | G | G | A |
| H | J | C | M | H | I | E | F | O | M |
| M | S | A | D | A | F | A | S | O | O |
| A | Q | U | A | R | I | U | M | N | N |
| R | W | Y | W | K | S | W | E | N | S |
| I | E | N | Q | P | H | S | Z | K | T |
| N | F | L | P | D | I | V | E | R | E |
| E | T | O | C | E | A | N | Y | U | R |

Name:

Age:

Address:

Postcode:

School:

Tel No:

Parent's email:

What are your plans for the summer holiday in Kingswood Parks?

.....

.....

Can you find all 10 sea related words? They will be either horizontal or vertical.

AQUARIUM

DIVER

MARINE

CORAL

FISH

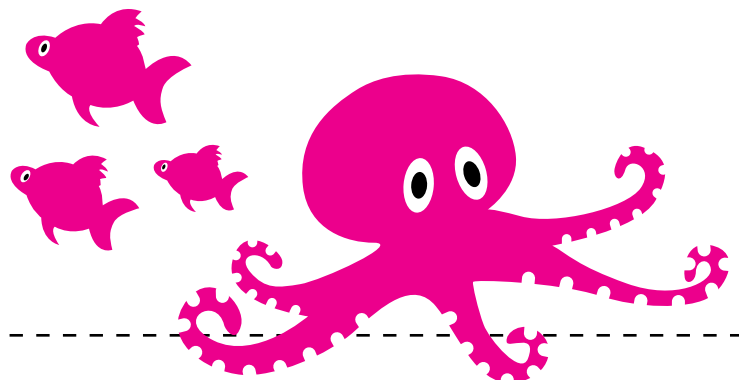
OCEAN

DEEP

LAGOON

SEA MONSTER

SHARK



Cut along here



Return all competition entries to: Mercury, Mercury House, Marfleet Lane, Hull, HU9 5RN - www.mercury-marketing.co.uk

All competition winners are drawn from all correctly completed entries and the Editor's decision is final. There is no cash alternative for the prizes. Please see www.kingswoodparks.co.uk for the full Terms and Conditions